

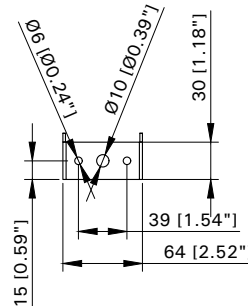
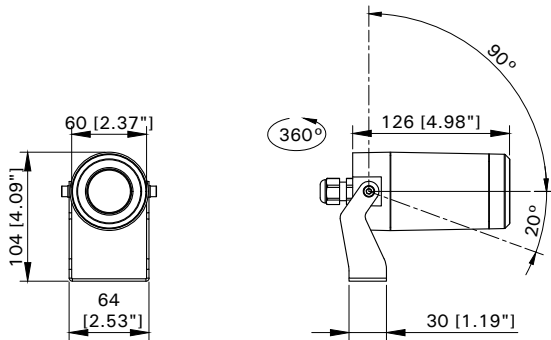
INSTALLATION AND SERVICE MANUAL

LIGMAN
NORTH AMERICA

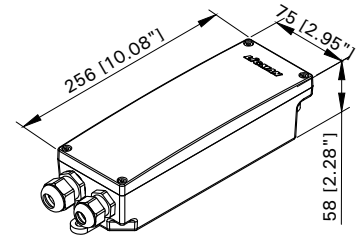
For Installation of Edinburgh 1 Floodlights, Projectors LED.
Model. UEDB-50001

PRODUCT DRAWING (DIMENSIONS)

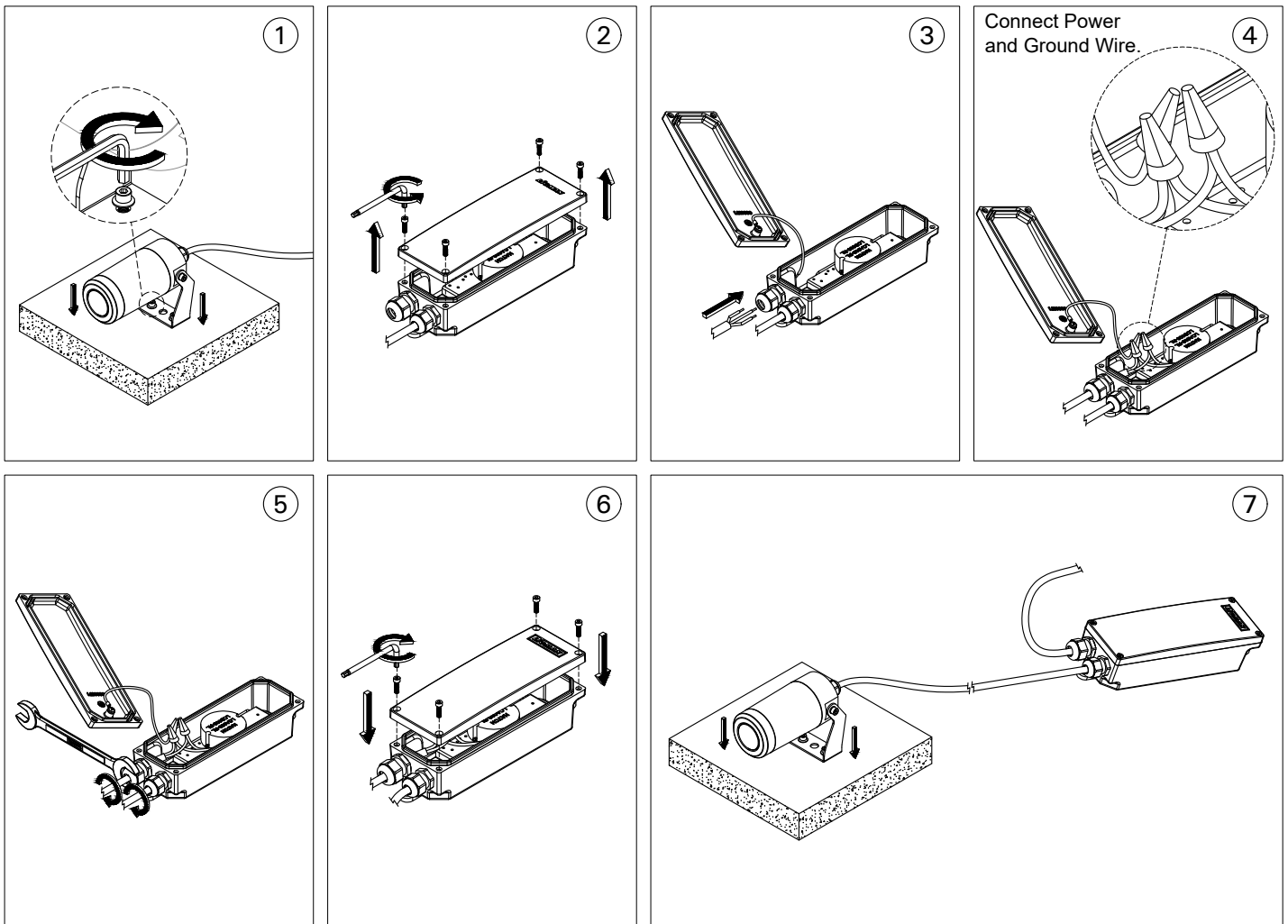
SUITABLE FOR WET LOCATIONS



MOUNTING DETAIL



A80191



Notice to installer :

1.WIRING INSTRUCTIONS Warning : RISK OF FIRE AND ELECTRICAL SHOCK. : FIXTURE MUST BE INSTALLED BY A QUALIFIED ELECTRICIAN ONLY>FIXTURE IS INTENDED FOR INSTALLATION IN ACCORDANCE WITH THE NATIONAL ELECTRICAL CODE, LOCAL AND FEDERAL CODE SPECIFICATIONS. DISCONNECT POWER BEFORE SERVICING.

2.This fixture has a VOLTAGE SPECIFIC BALLAST,Check that the supply voltage is the same as the installed ballast voltage.

Ligman Lighting USA

7144 NE Progress Court, Hillsboro
Oregon, 97124, USA
Tel : 503 645 0500 | Fax : 503 645 8100